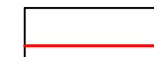



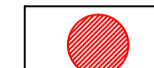



-  Site Boundary
-  Existing Trees
-  Root Protection Areas (RPAs)
-  Veteran Tree Buffer
-  Proposed Tree Removal
-  Advance Nursery Stock Trees
To be planted at 16-18cm at 6-8m intervals within hedge - will replace 3no hedge species
 - Acer pseudoplatanus 16-18 cm girth
 - Carpinus betulus 2.7-3.0m feathered
 - Quercus robur 14- 16 cm girth

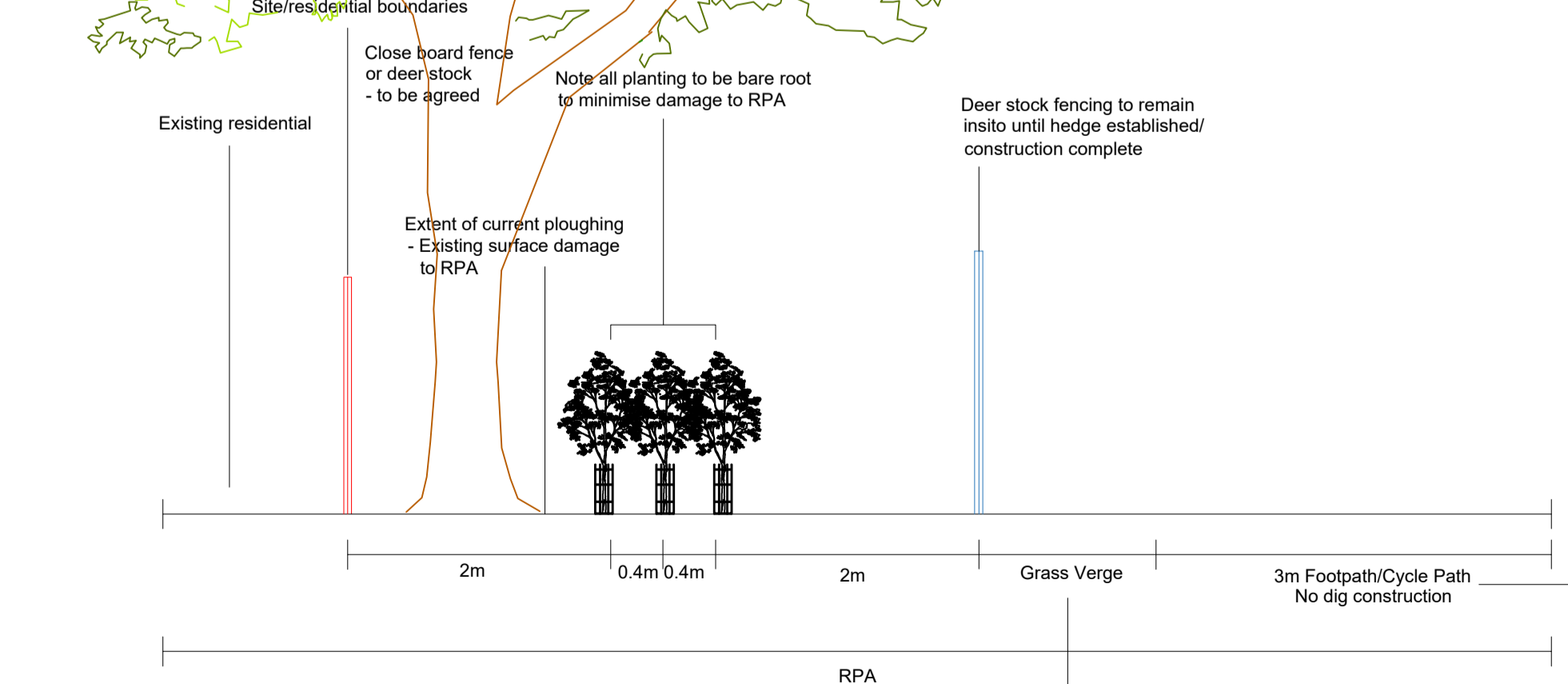
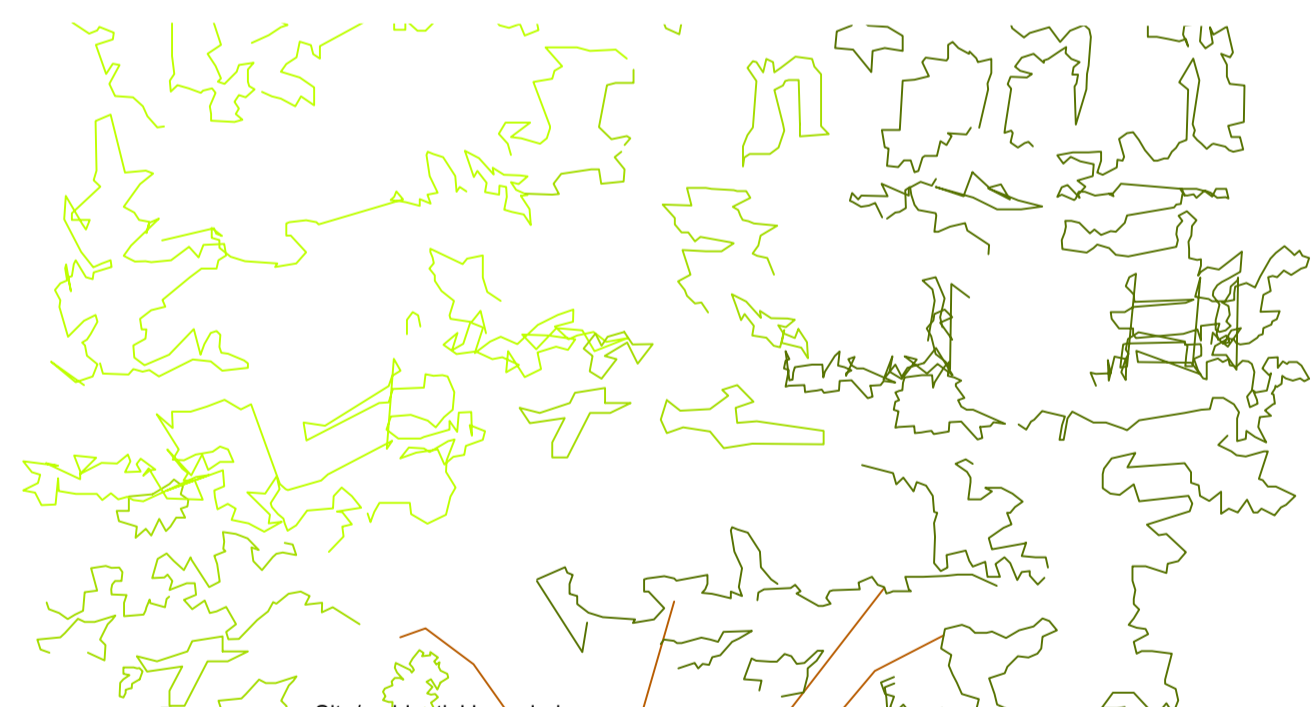
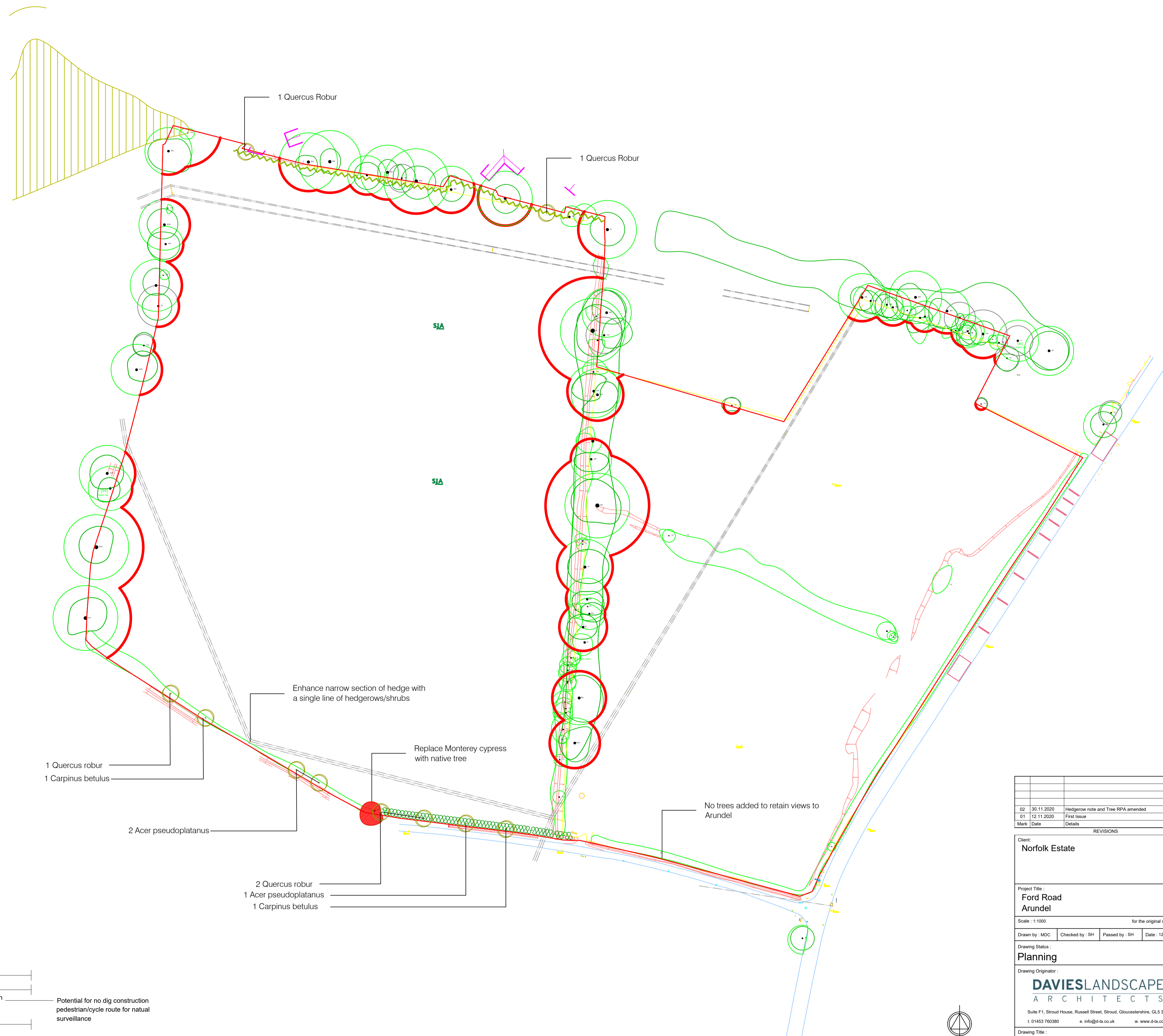
Hedgerow Mix Northern Boundary
Hedging should be planted in 3, staggered rows at a density of no less than 7 per meter with approximately 450mm between plants in the same row, and 300-400mm between rows. The interplant whips/transplants should be interspersed within this pattern in groups of 2/3.

Corylus avellana	90-120cm height	BR	10%
Crataegus monogyna	90-120cm height	BR	45%
Ilex aquifolium	90-120cm height	BR	5%
Lonicera periclymenum	20-30cm height	9cm Pot	Not included - plant within the hedge to climb through. At least 1 plant per 2 lin m
Prunus spinosa	90-120m	BR	25%
Rosa arvensis	50-80cm height	BR	Not included - plant within the hedge to climb through
Sambucus nigra	90-120cm	BR	10%
Taxus baccata	90-120cm height	BR	5%

Hedgerow Mix Southern Boundary
Hedging should be planted in two, staggered rows at a density of no less than 5 per meter with approximately 450mm between plants in the same row, and 300-400mm between rows. These should be interspersed within this pattern in groups of 2/3.

Corylus avellana	60-80cm height	BR	10%
Crataegus monogyna	60-80cm height	BR	45%
Ilex aquifolium	60-80cm height	BR	5%
Lonicera periclymenum	20-30cm height	9cm Pot	Not included - plant within the hedge to climb through. At least 1 plant per 2 lin m
Prunus spinosa	90-120m	BR	25%
Rosa arvensis	50-80cm height	BR	Not included - plant within the hedge to climb through
Sambucus nigra	90-120cm	BR	10%
Taxus baccata	90-120cm height	BR	5%

Note: All works within RPA's to be done manually



Typical section along the northern residential boundary - NTS

02	30.11.2020	Hedgerow note and Tree RPA amended	MDC					
01	12.11.2020	First Issue	MDC					
Mark	Date	Details	By					
REVISIONS								
Client: Norfolk Estate								
Project Title: Ford Road Arundel								
Scale: 1:1000 for the original size of: A1								
Drawing Status: Planning								
Drawing Originator: DAVIESLANDSCAPE ARCHITECTS								
Suite F1, Stroud House, Russell Street, Stroud, Gloucestershire, GL5 3AN								
t: 01453 790380 e: info@da.co.uk w: www.da.co.uk								
Drawing Title: Overall Planting Plan								
No	Drawn	Origin	Volume	Level	Type	Disc	Number	Revised
1972	1972	DLA	XX	XX	DR	L	19	P02
DO NOT SCALE FROM THIS DRAWING								
C:\Users\m\Documents\Projects\1972\Arundel\DLA\1972 L 19.P02 Overall Planting Plan.dwg								

